

GM-SLSL Stainless Steel 316 Spring Loaded Slide Latch

Features

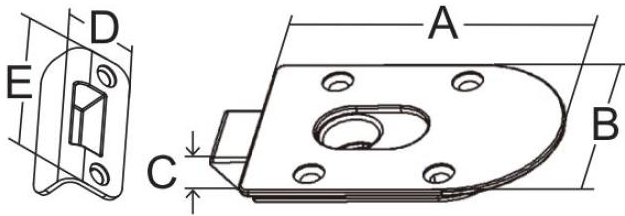
- Simple spring loaded slide latch is well-suited for popular plastic doors
- Easy adjustable slide
- The slide is reversible for left/right or in/out installation

Material

- Body: Stainless steel 316
- Slide: Nylon

Notes

- Uses screw size #8



GM-SLSL-J121573

GM-SLSL-J121574

Part No.	Model	A	B	C	D	E
GM-SLSL-J121573	For Fiberglass	91	56	10	21.5	55
GM-SLSL-J121574	For Wood				23	56

GM-SMML Stainless Steel 316 Surface Mount Mag Latch

Features

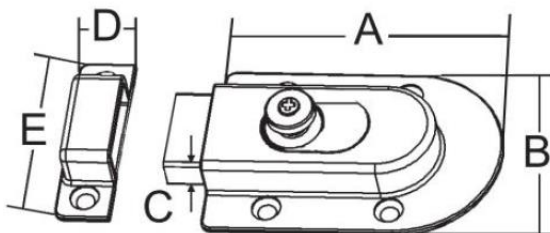
- Encapsulated magnet for marine use
- Magnetic slide and strike ensure positive and quiet engagement
- Slide can be spaced up to 15 mm from latch body and still actuated
- Slide can be adjusted to desired length by loosening the knob screw

Material

- Stainless steel 316

Notes

- Uses screw size #8



Part No.	A	B	C	D	E
GM-SMML-J321255	91	56	10	15	56